

# Link2-Display RD-7

## 7" Touchscreen

### Radiation Display Controller

#### Overview

The Link2-Display RD-7 is a standalone Radiation Display (RD) able to display instrument dose readings from connected and wireless dosimeters and area monitors.

The Link2-Display RD-7 has an integrated 7" touchscreen display that can be used on a tabletop or wall mounted. The Link2-Display creates a dashboard view for work areas, control rooms or other areas needing real time visible dose readings of nearby instrumentation.

#### Link2-Display highlights:

##### Connected Display

The Link2-Display RD-7 can be setup as a standalone display for viewing instrument data from a wired instrument or received wirelessly from nearby Bluetooth LE equipped instruments.

##### Radio System Compatibility

The Link2-Display RD-7 can be connected to an external base radio, including Thermo CNET and Mirion WRM systems. Data from area monitors can be received and displayed.

##### 7" Touchscreen Display

The Link2-Display RD-7 utilizes a 7" touchscreen able to display crisp text and full color images. The Link2-Display RD-7 can be mounted for quick viewing access and allows users to change the views through the touch interface.

##### Customization

The Link2-Display has configurable displays able to display dose rate information in a clear easy to view format. Alarm warnings, configurable thresholds, and color coded messages provides quick and effective details about instrument readings.

##### Instrument Support

The Link2-Display can receive and display data from the following instruments:

- Thermo EPD, RadEye
- Mirion DMC
- IIS WAM



#### RADIO OPTIONS

Link2-Display supports an internal Bluetooth radio for sensor data. External base radios can also be connected to the Link2-Display to communicate with in house radio systems.

#### TOUCH SUPPORT

The Link2-Display RD-7 has full touch support allowing users to change views and settings. Specific menu options are settings are also adjust through the touchscreen without the need of keyboard and mouse.

#### WI-FI STANDARDS

Link2-Display supports all standard Wi-Fi encryption standards including WPA-PSK, WPA2-PSK and WEP.

## DUAL POWER DESIGN

The Link2-Display is powered by a microUSB cable and AC wall which is included. The Link2-Display can also be powered from a 9-30VDC power source for fixed installations.

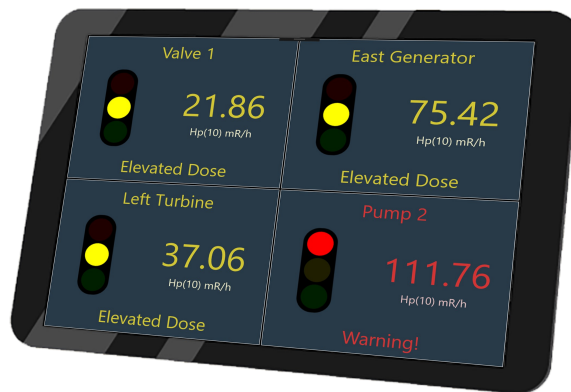
## SETUP AND CONFIGURATION

The Link2-Display is setup by connecting a keyboard and mouse to the USB ports on the Link2-Display. Once setup is complete, the mouse and keyboard are no longer needed for operation and can be used with the touchscreen interface.

For more information on any of our products or services please visit us on the Web at: [www.charthouseusa.com](http://www.charthouseusa.com)

## Specifications

<b>Wi-Fi Radio</b>	Wireless Standards	IEEE 802.11b, IEEE 802.11g, IEEE 802.11n
	Frequency	2.4-2.4835GHz
	Transmit Power Output	Up to 40 mW
	RF Data Rate	11n: Up to 150Mbps (dynamic)
	Security	WPA-PSK, WPA2-PSK and WEP
	FCC Part 15.247	TE7WN725N
	Industry Canada (IC)	8853A-WN725N
<b>Power Requirements</b>	USB Power	5V DC @ 800 mA
	DC Input (CDM60754 only)	9-30V DC
<b>General</b>	Dimensions (H x W x L)	11.6cm x 19.7cm x 4.68cm
	Display	7" 800x480 resolution
	Touchscreen	10 finger capacitive
<b>External Connections</b>	microUSB	Power Input
	HDMI	Rev 1.3 and Rev1.4 resolution up to 1920x1080
	USB	4 x USB 2.0
	RJ45	10/100 BaseT Ethernet
	3.5mm Jack	Stereo audio output
	Relay Control (CDM60754 only)	Up to 2A / 60V
	Digital Input (CDM60754 only)	Up to 30V



## Ordering Information

Part #	Model	Description
CDM60753	Link2-Display RD-7	Link2-Display Radiation Display- 7" Touchscreen
CDM60754	Link2-Display RD-7I	Link2-Display Radiation Display- 7" Touchscreen with I/O Expansion

**ChartHouse**  
data management

Smart Solutions, Smart Savings

149 Grandmar Chase  
Canton, GA 30115  
Phone: 678-935-0104  
Fax: 678-921-0234  
[sales@charthouseusa.com](mailto:sales@charthouseusa.com)